

CONTENTS

CYLINDER HEAD COVER	2	REAR ARM	24
CYLINDER/HEAD	3	DRIVE SHAFT	25
CRANKCASE	4	REAR SUSPENSION	26
RIGHT CRANKCASE COVER	5	STEERING	27
LEFT CRANKCASE COVER	6	FRONT SUSPENSION, WHEEL	28
CRANKSHAFT PISTON	7	FUEL TANK	29
CLUTCH	8	SEAT	30
CAMSHAFT/VALVE	10	FRONT WHEEL	31
CAMCHAIN/TENSIONER	11	REAR WHEEL	32
INTAKE	12	STEERING HANDLE, CABLE	34
GENERATOR	14	STAND, FOOTREST	36
STARTING CLUTCH	15	GUARD	37
STARTING MOTOR/KICK STARTER SPINDLE	16	HEADLIGHT	38
OIL PUMP	17	HANDLE SWITCH, LEVER	39
GEARSHIFT DRUM	18	ELECTRICAL 1	40
TRANSMISSION	19	ELECTRICAL 2	41
REAR CRANKCASE COVER	20	EXHAUST MUFFLER	42
FRAME	21	REAR LAMP	43
FRONT FENDER	22	WIRE HARNESS	44
REAR FENDER	23		

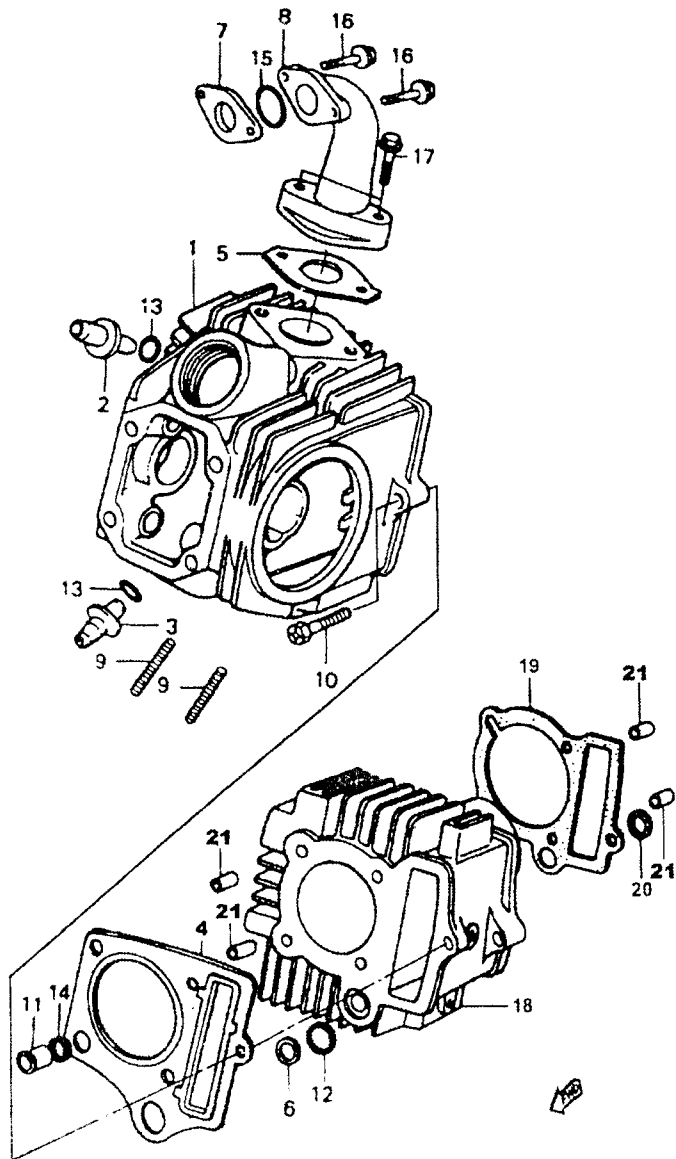


FIG. 2 CYLINDER/HEAD

ASSY. NO.	REF. NO.	PART NO.	DESCRIPTION	名称	Q'TY
2-A	1	11201-SPR-00	HEAD COMP., CYLINDER	气缸头	1
	2	11202-SPR-00	GUIDE, IN. VALVE	进气门导管	1
	3	11203-SPR-00	GUIDE, EX. VALVE	排气门导管	1
	13	90802-02502	O-RING, 25 × 2.4	O型圈 25 × 2.4	2
	4	11204-SPR-00	GASKET, ASSY., CYLINDER HEAD	气缸头垫组件	1
	5	11205-SPR-00	GASKET, INSULATOR	进气管密封垫	1
	6	90500-14800	COLLAR, 14.8MM	矩型垫圈	1
	7	11207-SPR-00	INSULTOR, CARBURETOR	化油器隔热胶垫	1
	8	11208-SPR-00	PIPE, IN	进气管	1
	9	90385-06032	BOLT, STUD, 6 × 32	双头螺栓 M6 × 32	2
	10	90321-06000	BOLT, 6MM	螺栓 M6 × 23	2
	11	90500-09500	COLLAR, 9.5MM	衬套	1
	12	90802-01450	O-RING, 14.5MM	矩型密封圈	1
	14	90802-00901	O-RING, 9 × 1.6	矩型密封圈	1
	15	11209-SPR-00	GASKET, RUBBER, 9MM	O型圈 30.8 × 3	1
	16	90330-06025	BOLT, FLANGE, 6 × 25	螺栓 M6 × 25	2
	17	90330-06028	BOLT, FLANGE, 6 × 28	螺栓 M6 × 28	2
	18	11210-SPR-00	CYLINDER	气缸体	1
	19	11211-SPR-00	GASKET, CYLINDER	气缸体密封垫	1
	20	91000-16000	PACKING, RUBBER, 16MM	矩型密封圈	1
	21	91103-08014	PIN, DOWL, 8 × 14	定位销	4

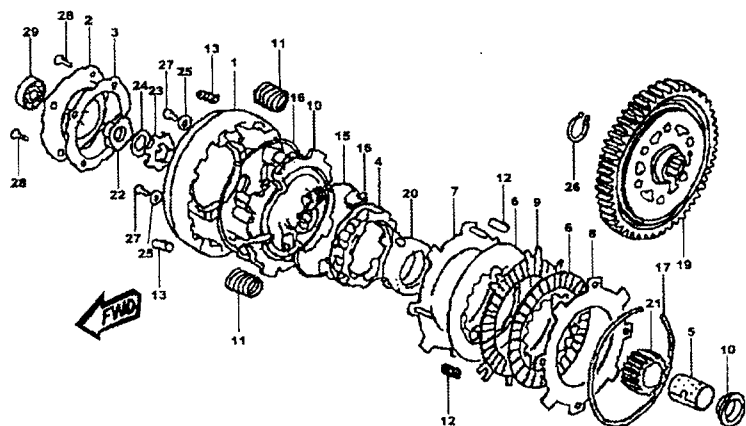


FIG. 7 CLUTCH

ASSY. NO.	REF. NO.	PART NO.	DESCRIPTION	名称	Q'TY
	1	22101-LIN-90	CLUTCH BODY	离合器外罩	1
	4	22121-LIN-90	CLUTCH ELEMENT	离合器芯	1
	6	22201-LIN-90	FRICITION DISK A	离合器摩擦片 A	2
	7	22300-LIN-90	PLATE A	离合器盘片 A	1
	8	22321-LIN-90	PLATE B	离合器盘牌子 B	1
	9	22331-LIN-90	FRICITION DISK B	离合器摩擦片 B	1
	11	33401-LIN-90	SPRING, CLUTCH	离合器弹簧	4
	12	22411-LIN-90	SPRING	离合器活动弹簧	4
7-A	13	22421-LIN-90	SPRING	离合器减震弹簧	4
	14	22531-LIN-90	BLOCK	离合器锤	28
	15	22535-LIN-90	RING	离合器锤芯环	1
	16	22536-LIN-90	RING	离合器锤止动环	1
	17	22901-LIN-90	CIRCLET	固定卡圈 (101.5MM)	1
	18	22911-LIN-90	SLEEVE	轴套 (17MM)	1
	20	23112-LIN-90	SLEEVE, DRIVEN.GEAR	驱动齿轮外套	1
	25	22347-LIN-90	WASHER	止动垫圈 (14MM)	4
	27	GB819-76	SCREW	螺钉 (5 × 10)	4
	2	22111-LIN-90	COVER	离合器外罩盖	1
	3	22119-LIN-90	GASKET	离合器外罩盖密封垫	1
	5	22131-LIN-90	SHAFT	离合器导轴	1
	10	22351-LIN-90	DRIVING PLATE	驱动盘片	1
	19	22310-LIN-90	DRIVEN GEAR	初级驱动齿轮 (69T)	1
	21	22120-LIN-90	DRIVEN GEAR	初级驱动齿轮 (17T)	1
	22	22346-LIN-90	LOCK NUT	锁定螺母 (14MM)	1

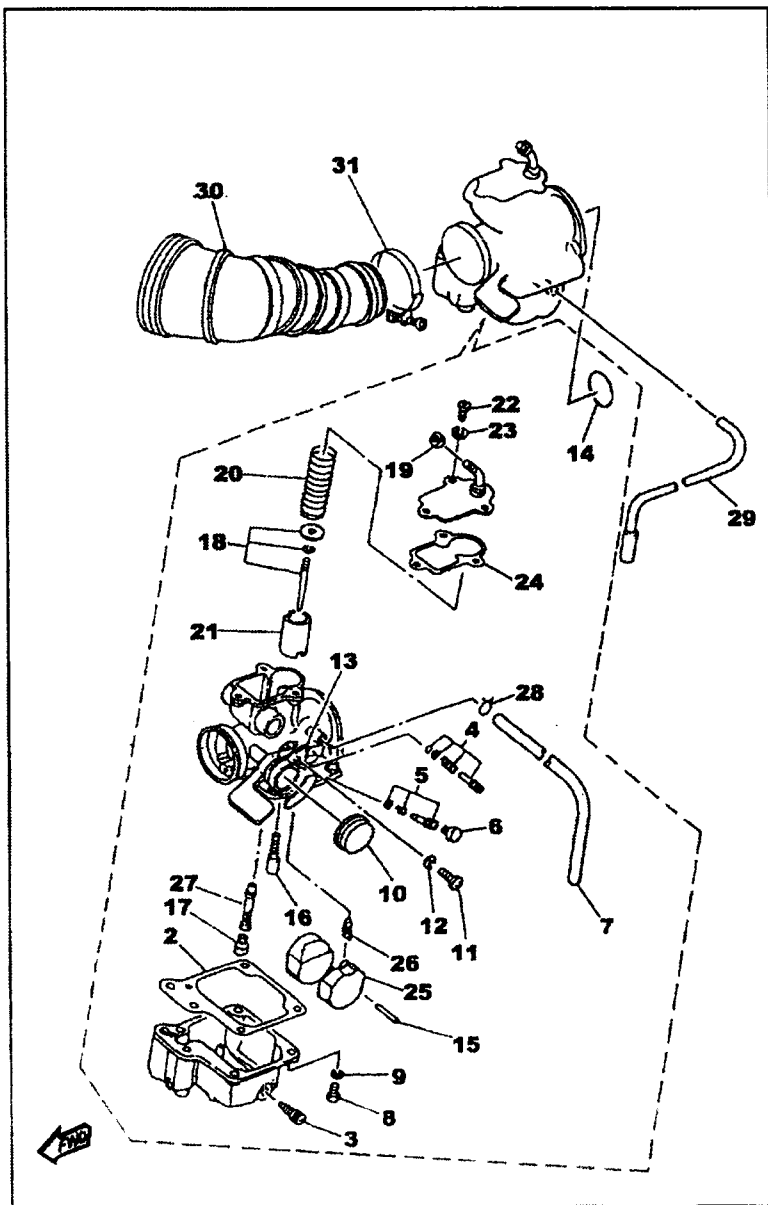


FIG.10 INTAKE						
ASSY. NO.	REF. NO.	PART NO.	DESCRIPTION	名称	Q'TY	
	2	14184-SPR-00	GASKET, FLOAT CHAMBER	油室密封垫	1	
	3	14191-SPR-00	PLUG, DRAIN	放油螺钉	1	
	4	14103-SPR-00	THROTTLE SCREW SET	混合比调节螺钉组件	1	
	5	14104-SPR-00	AIR SCREW SET	怠速调节螺钉组件	1	
	6	14991-SPR-00	CAP	外罩	1	
	8	98502-04014	SCREW, PAN HEAD	螺钉	4	
	9	92902-04100	WASHER, SPRING	弹垫	4	
	10	14169-SPR-00	CAP	外罩	1	
	11	98502-04008	SCREW, PAN HEAD	螺钉	1	
	12	92902-04100	WASHER, SPRING	弹垫	1	
11-A	13	14146-SPR-00	PLATE	弹垫	1	
	14	14147-SPR-00	O-RING	O型圈	1	
	15	14186-SPR-00	PIN, FLOAT	销子	1	
	16	14142-SPR-00	JET, PILOT(#12.5)	副量孔	1	
	17	1414E-SPR-00	JET, MAIN(#76.3)	主量孔	1	
	18	1490J-SPR-00	NEEDLE SET	油针组件	1	
	19	14161-SPR-00	NUT, CABLE ADJUSTING	调节螺母	1	
	20	14131-SPR-00	SPRING, THROTTLE VALVE	弹簧	1	
	21	14112-SPR-00	VALVE, THROTTLE 1	柱塞	1	
	22	98502-04010	SCREW, PAN HEAD	螺钉	3	
	23	92902-04100	WASHER, SPRING	弹垫	3	
	24	14198-SPR-00	GASKET	密封垫	1	
	25	14185-SPR-00	FLOAT	浮子	1	
	26	14150-SPR-00	NEEDLE ASSY	针阀	1	

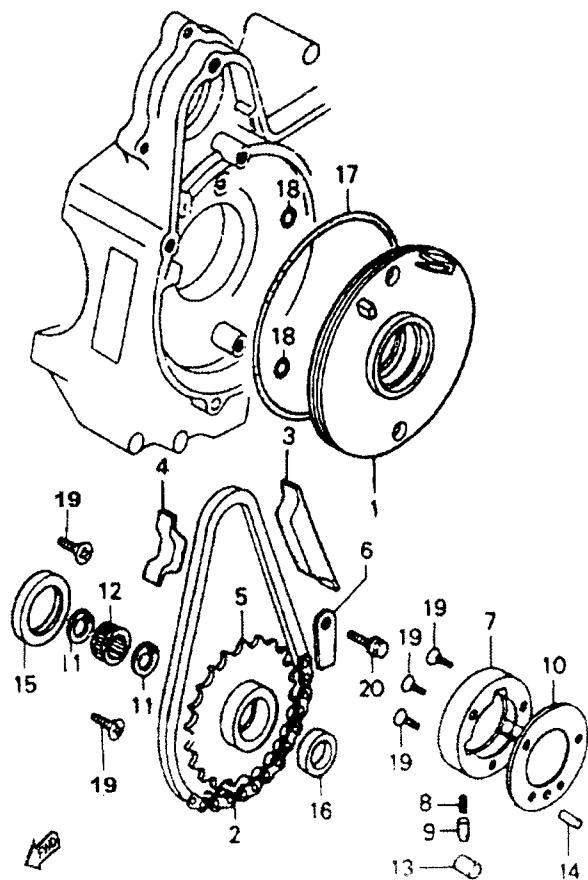


FIG. 12 STARTING CLUTCH

ASSY. NO.	REF. NO.	PART NO.	DESCRIPTION	名称	Q'TY
	1	32101-SPR-00	PLATE, OIL SEPARATE	隔油盘	1
	2	32102-SPR-00	CHAIN, STARTING	启动链条	1
	3	32103-SPR-00	GUIDE, STARTER CHAIN	启动链条导向板	1
	4	32104-SPR-00	PROTECTOR, STARTER CHAIN	启动链条护板	1
	6	32106-SPR-00	PLATE, STARTING SPROCKET SETTING	启动链轮定位板	1
12-A	7	32107-SPR-00	OUTER, STARTING CLUTCH	启动离合器壳体组件	1
	8	32108-SPR-00	SPRING, STARTING CLUTCH ROLLER	离合器滚柱弹簧	3
	9	32109-SPR-00	CAP, STARTING CLUTCH ROLLERS SPRING	弹簧顶销	3
	10	32110-SPR-00	PLATE, STARTING CLUTCH SIDE	启动离合器侧板	1
	13	91200-10100	ROLLER, 10 × 10	离合器滚柱	3
	14	91200-05118	ROLLER, 5 × 11.8	销轴	1
12-B	5	32105-SPR-00	SPROCKET COMP., STARTING	启动链轮组件	1
	11	90401-23000	CIRCLIP, INTERNAL, 23MM	挡圈	2
	12	90201-00000	BEARING, NEEDLE, 19 × 23 × 13	滚针轴承	1
	15	90900-30042	OIL SEAL, 30 × 42 × 4.5	油封 30 × 42 × 4.5	1
	16	90900-18928	OIL SEAL, 18.9 × 28 × 5	油封 18.9 × 28 × 5	1
	17	90802-10702	O-RING, 107 × 2	O型圈	1
	18	90802-00601	O-RING, 6 × 1.7	O型圈	2
	19	91501-06160	SCREW, FLAT, 6 × 16	螺钉 m6 × 16	5
	20	90330-06010	BOLT, FLANGE, 6 × 10	螺栓 m6 × 10	1

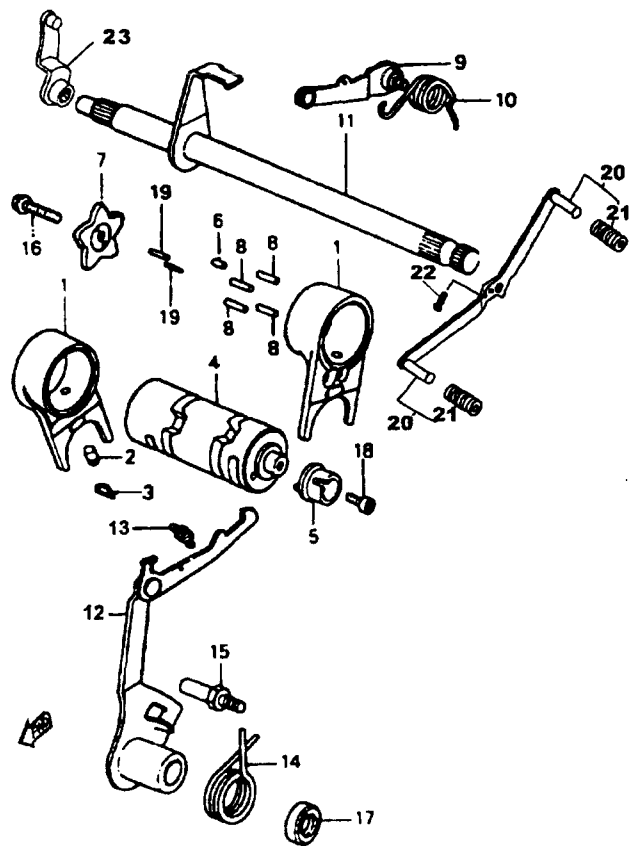


FIG. 15 GEARSHIFT DRUM

ASSY. NO.	REF. NO.	PART NO.	DESCRIPTION	名称	Q'TY
15-A	1	34101-SPR-00	FORK, GEARSHIFT	变速拨叉	2
	2	34102-SPR-00	PIN, GEARSHIFT FORK GUIDE	导向销	2
	3	34103-SPR-00	CLIP, GEARSHIFT FOTK GUIDE PIN	卡簧	2
	4	34104-SPR-00	DRUM, GEARSHIFT	变速凸轮轴	1
	6	91200-04100	ROLLER, 4 × 10	滚针	1
	7	34107-SPR-00	PLATE, GEARSHIFT DRUM STOPPER	定位档板	1
	8	34108-SPR-00	PIN, GEARSHIFT DRUM	滚针	4
	16	90379-06000	BOLT, KNOCK, 6MM	螺栓	1
	19	91200-03085	ROLLER, 3 × 8.5	滚针	1
	5	34105-SPR-00	PIECE, CHANGE SWITCH DRIVER	档位开关接触片	1
9	34109-SPR-00	SPINDLE COMP., GEARSHIFT DRUM	定位轮组件	1	
10	34110-SPR-00	SPRING, SHIFT DRUM STOPPER	回位弹簧	1	
15-B	11	34111-SPR-00	SPINDLE COMP., GEARSHIFT	换档轴	1
	12	34112-SPR-00	ARM COMP., GEARSHIFT	凸轮轴拨叉总成	1
	13	34113-SPR-00	SPRING, GEARSHIFT ARM	拨叉弹簧	1
	14	34114-SPR-00	SPRING, GEARSHIFT RETURN	扳簧	1
	23	12204-SPR-00	LEVER COMP., CLUTCH	离合器操纵臂组件	1
15	34115-SPR-00	PIN, SHIFT RETURN SPTRING	定位螺栓	1	
17	90900-11624	OIL SEAL, 11.6 × 24 × 10	油封	1	
18	90383-06016	BOLT, SOCKET, 6 × 16	螺栓	2	
15-C	20	34116-LIN-90	PEDAL, CHANGE	换档臂	1
	21	34117-SPR-00	RUBBER, CHANGE PEDAI	橡胶套	1
	22	34118-SPR-00	BOLT, M6 × 20	螺钉 M6 × 20	1

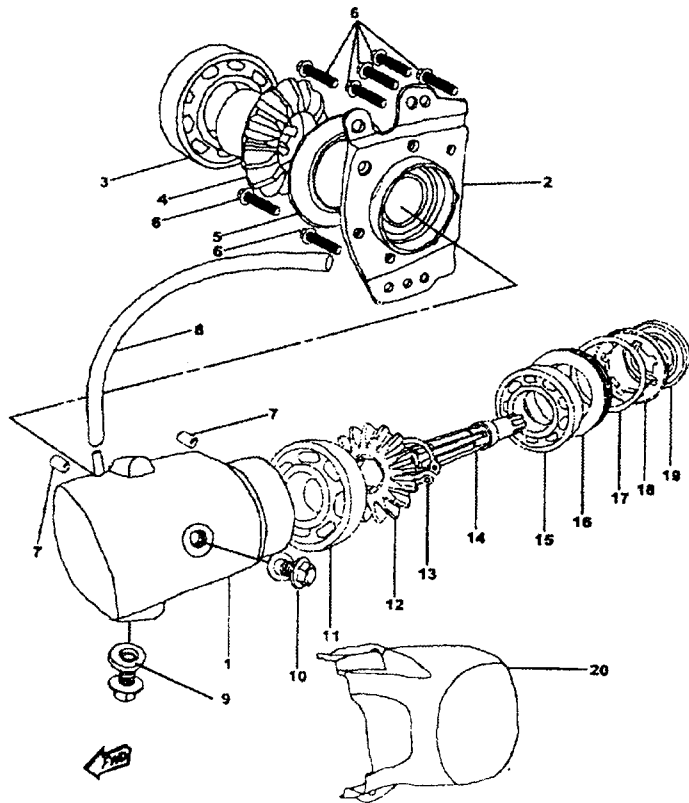


FIG. 17 REAR CRANKCASE COVER

ASSY. NO.	REF. NO.	PART NO.	DESCRIPTION	名称	Q'TY
	1	20025-SPR-00	COVER, REAR CRANKCASE	前传动箱体	1
	2	2003A4-SPR-00	CRANKCASE, REAR	安装座	1
	3	90201-06006	BEARING (B6006)	轴承	1
	4	2006A4-SPR-00	GEAR, DRIVE	主动齿轮	1
	5	2001A4-SPR-00	SHIM, PINION	密封圈	1
	6	90330-06000	BOLT, FLANGE (M6)	螺栓	6
	7	91103-08012	PIN	定位销	1
	8	90445-083J4	HOSE	通气管	1
	9	90330-06012	PLUG, STRAIGHT SCREW	螺栓 / 密封圈	1/1
	10	90330-08010	PLUG, OIL	螺栓 / 密封圈	1/1
	11	90201-06005	BEARING (B6005)	轴承	1
	12	20007-SPR-00	GEAR, FINAL DRIVEN	从动齿轮	1
	13	90401-440017	CIRCLIP	卡圈	1
	14	20085-SPR-00	AXLE, DRIVE	传动轴	1
	15	90201-06303	BEARING (B6303)	轴承	1
17-A	16	20095-SPR-00	HOUSING, BEARING	衬套	1
	17	91801-40000	O RING	O 型圈	1
	18	2010S-SPR-00	NUT	锁紧螺母	1
	19	90900-29017	OIL SEAL	油封	1
	20	20100-SPR-00	OUTER COVER, RR. CRANKCASE	左后盖	1

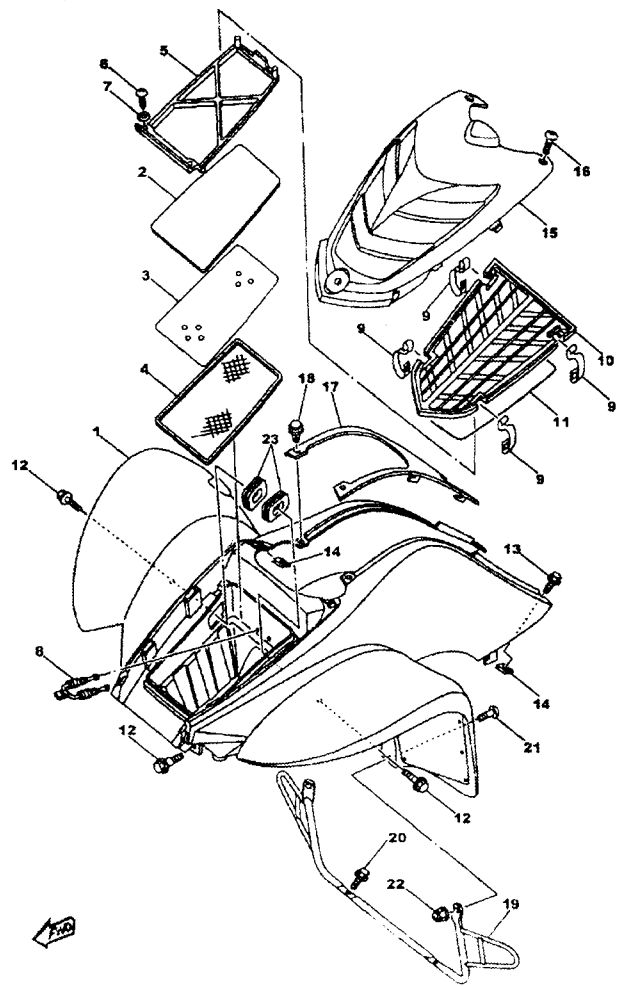


FIG. 19 FRONT FENDER

ASSY. NO.	REF. NO.	PART NO.	DESCRIPTION	名称	Q'TY
	1	601040-LSN100	FRONT FENDER COMP.	前挡泥板	1
19-A	2	104002-LSN100	ELEMENT, AIR CLEANER	空滤器泡沫	1
	3	104005-LSN100	PLATE	空滤器阻风板	1
	4	104003-LSN100	PLATE, ELEMENT	空滤器网板	1
	5	104004-LSN100	GUIDE	空滤器支架	2
	6	908450-420016	SCREW, TAPPING	螺钉	2
	7	909710-050000	WASHER	平垫	1
	10	104001-LSN100	CAP, CLEANER CASE 1	空滤器盖板	1
	11	104006-LSN100	SEAL	空滤器密封圈	1
	8	104011-LSN100	HOOK	空滤器培条	4
	9	104010-LSN100	HOOK	空滤器盖板卡子	1
	12	907414-060016	BOLT	螺栓	2
13	907414-050016	BOLT, WITH WASHER	螺栓	2	
14	900503-LSN100	NUT, SPRING	卡子	4	
15	601050-LSN100	FENDER, FRONT 2	前面罩	1	
16	905012-LSN100	BOLT, HEXAGON SOCKET HEAD	螺栓	2	
17	601020-LSN100	COVER, TOP	油箱护板	1	
18	906020-LSN100	RIVET	橡胶安装钉组件	2	
19	701020-LSN100	STAY, FENDER 1	前挡泥板支架	1	
20	905789-060012	BOLT, FLANGE	螺栓	2	
21	901380-050018	SCREW, BINDING	螺栓	2	
22	906187-050000	NUT, SELF-LOCKING	螺母	2	
23	104007-LSN100	DUC 1	空滤器吸风口胶圈	2	

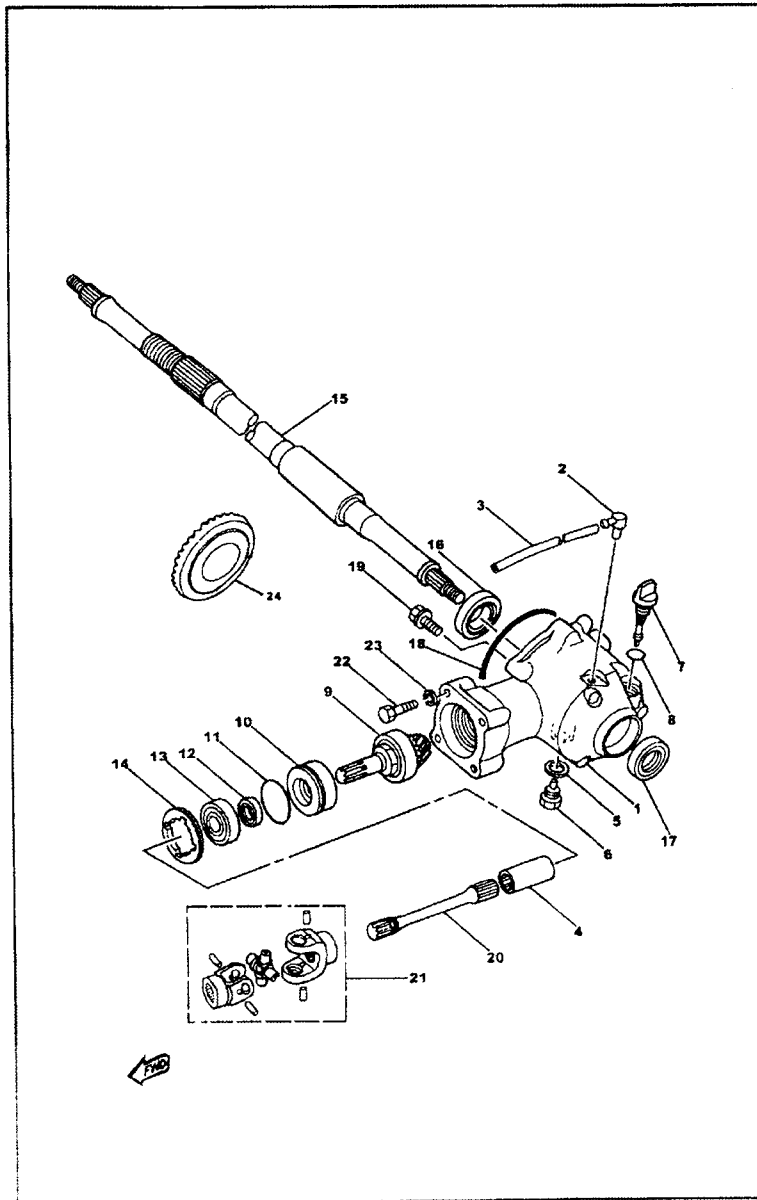


FIG. 22 DRIVE SHAFT

REF. NO.	PART NO.	DESCRIPTION	名称	Q'TY
1	3GB-46151-00	HOUSING, DRIVE SHAFT	后传动箱体	1
2	105201-LSN100	BREATHER	通气嘴	1
3	105202-LSN100	HOSE (L1200)	通气管	1
4	105003-LSN100	COUPLING, GEAR	花键套	1
5	90340-14132	PLUG, STRAIGHT SCREW	铅垫圈	1
6	214-11198-01	GASKET	螺栓	1
7	3GB-46120-00	PLUG, OIL LEVEL	机油尺	1
8	93210-14104	O-RING	O型圈	1
9	3GB-46120-00	DRIVE PINION COMP.	主动齿组件	1
10	90560-23355	SPACER	衬套	1
11	93210-43713	O-RING	O型圈	1
12	93102-17271	OIL SEAL	油封	1
13	93306-30306	BEARING (B6303)	轴承	1
14	90179-55464	NUT	锁紧螺母	1
15	105001-LSN100	REAR AXLE	后轮轴	1
16	93306-07801	BEARING	轴承	1
17	93102-28022	OIL SEAL	油封	1
18	105008-LSN100	O-RING	O型圈	1
19	95817-06016	BOLT, FLANGE	螺栓	1
20	105002-LSN100	SHAFT, DRIVE	中间轴	1
21	105009-LSN100	CROSS JOINT COMP	方向节组件	1
22	90101-08461	BOLT	螺栓	4
23	92907-08100	WASHER, SPRING	弹垫	4
24	105010-LSN100	RING, GEAR	后轮轴从动齿轮	1

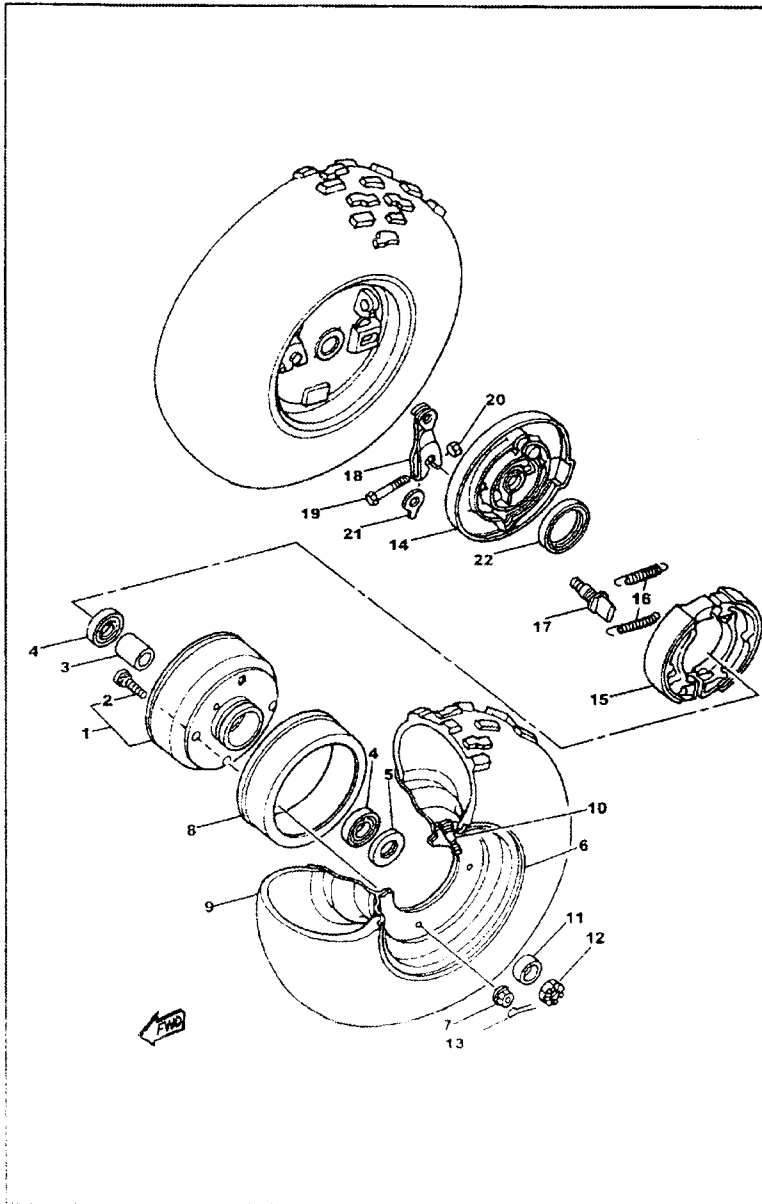


FIG. 28 FRONT WHEEL					
ASSY. NO.	REF. NO.	PART NO.	DESCRIPTION	名称	Q'TY
28-A	1	501030-LSN100	HUB, FRONT	前制动器外罩	2
	2	501031-LSN100	BOLT	专用螺栓	4
	3	501032-LSN100	SPACER, BEARING	套管	2
	4	501033-LSN100	BEARING (B6003)	轴承	4
	5	501034-LSN100	OIL SEAL	油封	2
	8	501035-LSN100	RING 1	减震胶圈	2
	11	501036-LSN100	COLLAR	衬管	2
	12	906181-202000	NUT, CASTLE	开槽螺母	2
6	410111-LSN100	WHEEL COMP.	前轮毂	2	
7	906177-080000	NUT, FLANGE	螺母	8	
9	410900-LSN100	TIRE FRONT (19 x 7-8)	前轮外胎	2	
10	410901-LSN100	VALVE, RIM	气门嘴	2	
13	909100-350040	PIN, COTTER	开口销	2	
28-B	14	501041-LSN100	PLATE, BRAKE SHOE	左/右制动器座	1/1
	15	501042-LSN100	BRAKE SHOE SET	制动蹄块	4
	16	501043-LSN100	SPRING, TENSION	弹簧	4
	17	501044-LSN100	CAMSHAFT	凸轮轴	2
	18	501045-LSN100	LEVER, CAMSHAFT 1	摇臂	2
	19	905782-060030	BOLT	螺栓	2
	20	906170-060000	NUT	螺母	2
	21	501046-LSN100	PLATE, INDICATOR	定位板	2
	22	501047-LSN100	OIL SEAL	油封	2

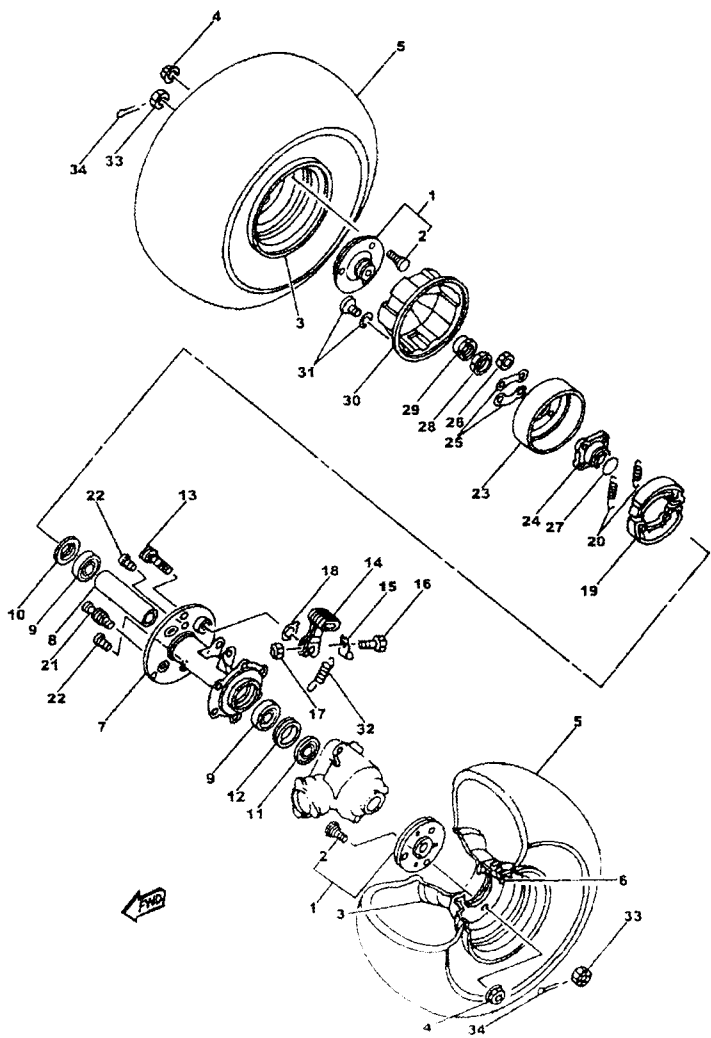


FIG. 29 REAR WHEEL

ASSY. NO.	REF. NO.	PART NO.	DESCRIPTION	名称	Q'TY
29-A	1	502040-LSN100	COLLAR, WHEEL	连接盘组件	2
	2	502041-LSN100	BOLT	螺栓	12
	3	410201-LSN100	REAR WHEEL COMP.	后轮毂	2
	4	906177-080000	NUT, FLANGE	螺母	12
	5	420900-LSN100	TIRE (18 x 9.50-8)	后轮外胎	2
	6	410901-LSN100	VALVE, RIM	气门嘴	2
29-B	7	204001-LSN100	HUB, REAR	后桥壳体	1
	8	204016-LSN100	SPACER, BEARING	衬套	1
	9	204005-LSN100	BEARING	轴承	2
	10	204006-LSN100	OIL SEAL	油封	1
	11	204007-LSN100	OIL SEAL	油封	1
	12	204008-LSN100	NUT, AXLE	油封	1
	13	204013-LSN100	CAMSHAFT	凸轮轴	1
	14	204002-LSN100	LEVER, CAMSHAFT	后制动摇臂	1
	15	204009-LSN100	HOOK, SPRING	弹簧座	1
	16	905782-060030	BOLT	螺栓	1
	17	906170-060000	NUT	螺母	1
	18	204011-LSN100	PLATE, INDICATOR	定位板	1
	21	204014-LSN100	PIN, PIVOT	定位销	1
	22	204015-LSN100	BOLT, SERRATION	螺栓	3
	32	704002-LSN100	SPRING, TENSION	后制动摇臂弹簧	1
29-C	19	204003-LSN100	BRAKE SHOE SET	制动蹄块	2
	20	204004-LSN100	SPRING, TENSION	弹簧	2
	23	502030-LSN100	DRUM BRAKE	后制动鼓	1

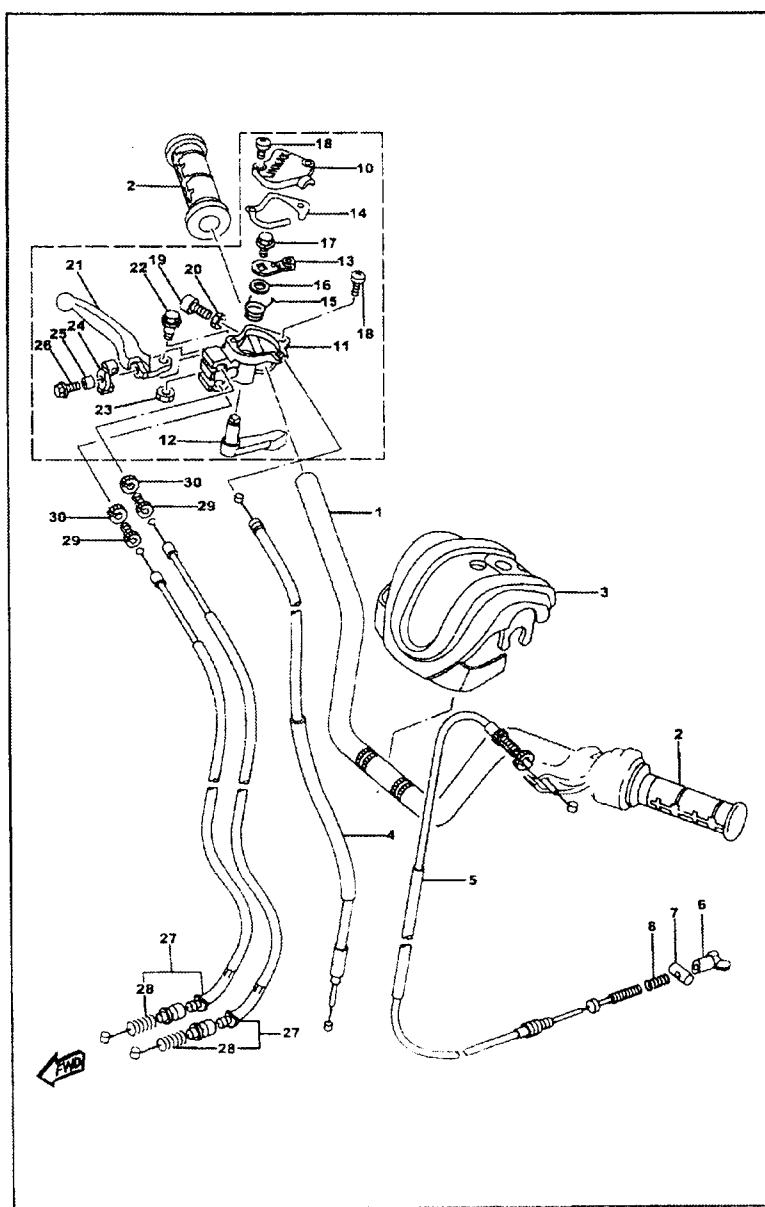


FIG. 30 STEERING HANDLE. CABLE

ASSY. NO.	REF. NO.	PART NO.	DESCRIPTION	名称	Q'TY
	1	401000-LSN100	HANDLEBAR	手把管	1
	2	401001-LSN100	GRIP	手把胶	2
	3	601010-LSN100	PROTECTOR. HANDLEBAR	手把管装饰盖	1
	4	405010-LSN100	CABLE, THROTTLE 1	油门线	1
30-A	5	405030-LSN100	CABLE, BRAKE	后刹线	1
	6	405031-LSN100	NUT. ADJUSTING	调节螺母	1
	7	405032-LSN100	SPRING. COMPRESSION	销	1
	8	405033-LSN100	PIN	弹簧	1
30-B	10	405201-LSN100	CAP, GEAR	加油器盖	1
	11	405202-LSN100	BODY, THROTTLE	加油器座	1
	12	405203-LSN100	LEVER, THROTTLE	加油手柄	1
	13	405204-LSN100	ARM. THROTTLE	摇臂	1
	14	405205-LSN100	GASKET	密封垫	1
	15	405206-LSN100	SPRING, TORSION	回位弹簧	1
	16	908480-122002	WASHER, PLATE	平垫	2
	17	905789-080012	BOLT, FLANGE	螺栓	1
	18	908180-040010	SCREW, PAN HEAD	螺钉	1
	19	905782-050016	BOLT	调节螺钉	1
	20	906170-050000	NUT	锁紧螺母	1
	21	405207-LSN100	LEVER 2	手柄	1
	22	405208-LSN100	BOLT	螺栓	1
	23	906170-060000	NUT U	螺母	1
	24	405209-LSN100	JOINT, CABLE	杆杆摇臂	1
	25	405210-LSN100	COLLAR	衬套	1

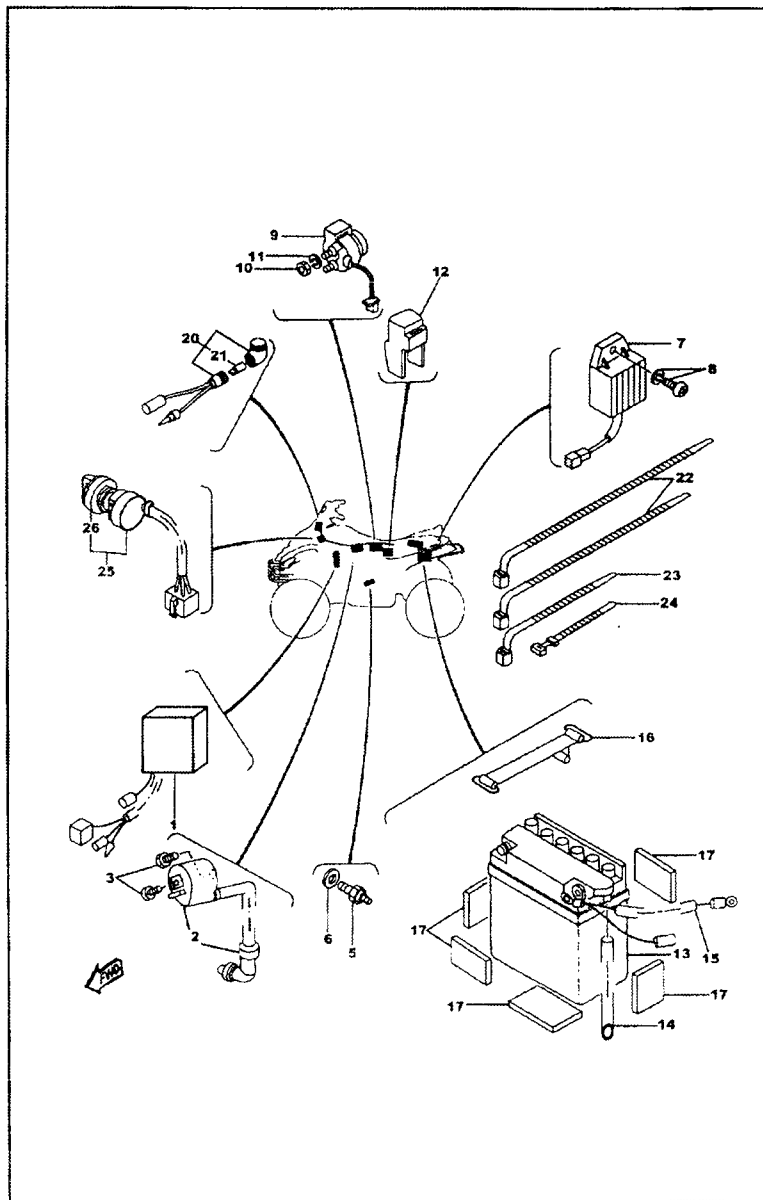


FIG. 35 ELECTRICAL 1

ASSY. NO.	REF. NO.	PART NO.	DESCRIPTION	名称	Q'TY
	1	303010-LSN100	C.D.I. UNIT ASSY	直流点火器	1
	2	303030-LSN100	IGNITION COIL ASSY	点火线圈	1
	3	907407-060016	SCREW, HEXAGON	螺钉	2
	4	303031-LSN100	PLUG CAP ASSY	火花塞帽	1
	5	308000-LSN100	STOP SWITCH	刹车开关	1
	6	308001-LSN100	GASKET	垫圈	1
	7	303020-LSN100	RECTIFIER®ULATOR ASSY	全波调压器	1
	8	907407-060016	SCREW, PAN HEAD	组合螺钉	1
	9	303040-LSN100	STARTER RELAY ASSY	启动继电器	1
	10	906170-060000	NUT	螺母	1
	11	909300-060000	WASHER, SPRING	弹簧	1
	12	303050-LSN100	RELAY ASSU	切断继电器	1
35-A	13	301000-LSN100	BATTERY ASSY	蓄电池	1
	14	301002-LSN100	HOSE (L450)	通气管	1
	15	301004-LSN100	WIRE, PLUS LEAD	电线	1
	16	301003-LSN100	BAND, BATTERY	电瓶扎带	1
	17	301005-LSN100	SEAT, BATTERY	减震泡沫	5
	20	302005-LSN100	PILOT LIGHT ASSY	空挡灯线束	1
	21	302006-LSN100	BULB (14V-1.7W)	灯泡	1
	22	302011-LSN100	CLAMP, HOSE	电缆扎带 I	2
	23	302012-LSN100	CLAMP	电缆扎带 II	4
	24	302013-LSN100	BAND, SWITCH CORD	电缆扎带 III	1
	25	304010-LSN100	MAIN SWITCH ASSY	点火锁	1
	26	304011-LSN100	CAP, KEY	锁紧螺母	1

