

CONTENTS

CRANK CASE	2	FRONT SUSPENSION. WHEEL	20
CYLINDER HEAD COVER. CYLINDER HEAD	4	FUEL TANK	21
CYLINDER. CRANKCASE. PISTON	6	SEAT	22
RIGHT CRANKCASE COVER	7	FRONT WHEEL	23
TRANSMISSION	8	REAR WHEEL	24
FAN COVER. GENERATOR	9	STEERING HANDLE. CABLE	25
DRIVEN PULLEY	10	STAND. FOOTREST	26
STARTING MOTOR. OIL PUMP	11	GUARD	27
CARBURETOR	13	HANDLE SWITCH. LEVER	28
FRAME	14	EXHAUST MUFFLER	29
FRONT FENDER	15	ELECTRICAL 1	30
REAR FENDER	16	ELECTRICAL 2	31
REAR ARM	17	REAR LAMP	32
DRIVE SHAFT	18	WIRE HARNESS	33
STEERING	19		

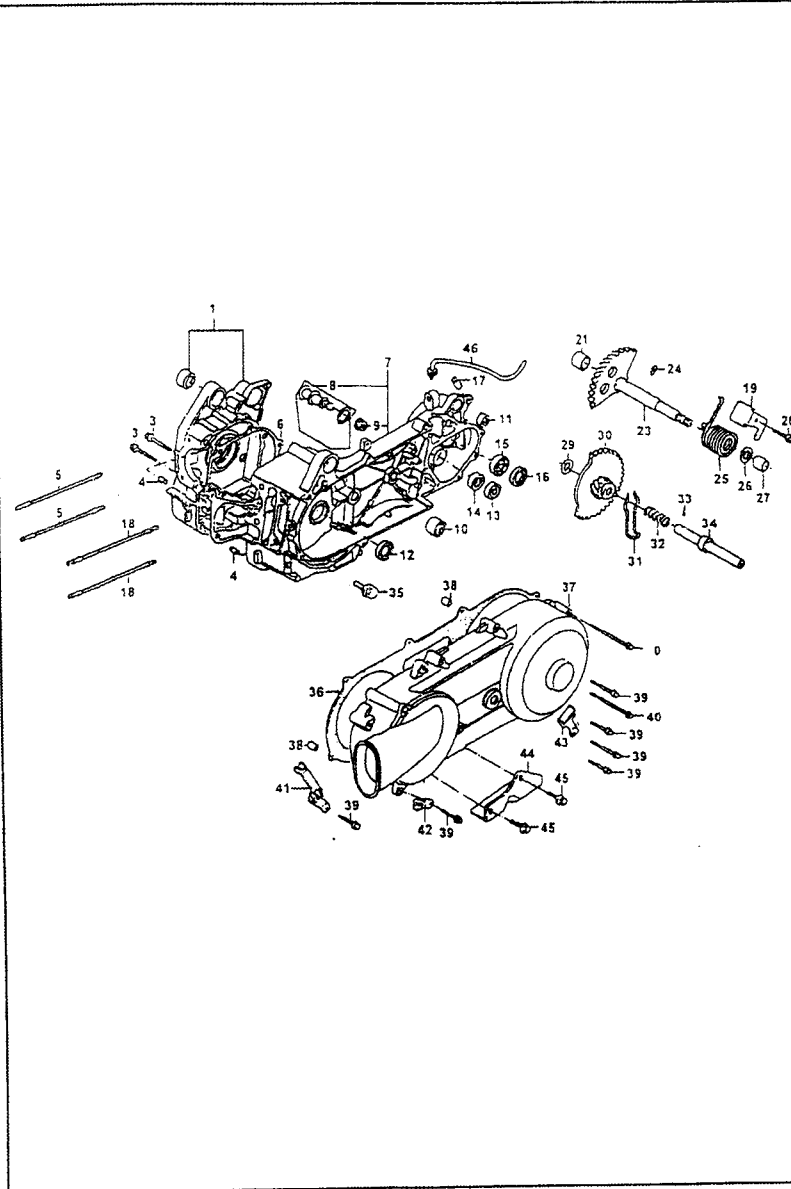


FIG.1 曲轴箱 CRANK CASE

REF. NO.	PART NO.	DESCRIPTION	名称	Q'TY
1		CRANK CASE COMP R	右曲轴箱	1
3		BOLT FLANGE 6 × 50	螺丝 6 × 50	2
4		PIN DOWEL 8 × 14	定位销 8 × 14	2
5		BOLT A STUD 8 × 187.5	双头螺丝 8 × 187.5	2
6		GASKET CRANK CASE A	曲轴箱垫片	1
7		CRANK CASE COMP L	左曲轴箱	1
8		PIN ASSY ANCHOR	煞车鼓固定销总承	1
9		NUT FLANGE 8MM	平螺帽 8MM	1
10		RUB BUSH ENG HANGER	引擎吊架衬套	1
11		UNDER RUBBER RUSH RR CUSHION	后缓冲下衬套	1
12		OIL SEAL 19.8 × 30 × 5	油封 19.8 × 30 × 5	1
13		BRG BALL RADIAL 6301TMB	轴承 6301TMB	1
14		BRG BALL RADIAL 6002	轴承 6002	1
15		BRG BALL RADIAL 6004 UU	轴承 6004 6004 UU	1
16		OIL SEAL 27 × 42 × 7	油封 27 × 42 × 7	1
17		GUIDE RUBBR SPG	减震橡皮	2
18		BOLT B STUD 8 × 195.5	双头螺丝 8 × 195.5	2
19		PLATE KICK RETURN STOPPER	起动机回位制止板	1
20		BOLT FLANGE 6 × 14	螺丝 6 × 14	1
21		BUSH 12 × 16 × 12	衬套 12 × 16 × 12	1
23		SPINDLE COMP KICK STARTER	起动机轴	1
24		PIN SPECIAL 4.5MM	特殊销 4.5MM	1
25		SPG KICK STARTER	起动机弹簧	1
26		WASHER 14MM	垫圈	1

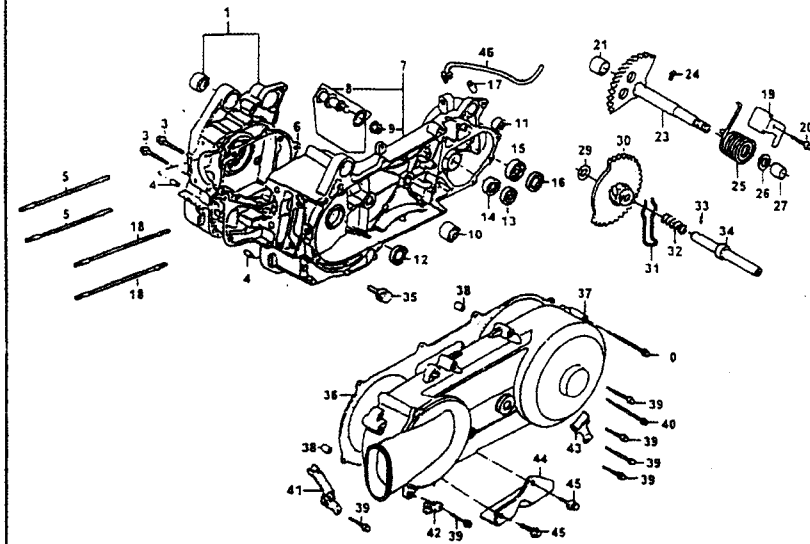


FIG.1 曲轴箱 CRANK CASE

REF. NO.	PART NO.	DESCRIPTION	名称	Q'TY
27		BUSH KICK SPDL 14 × 18 × 16	起动轴衬套 14 × 18 × 16	1
29		WASHER 12MM	垫圈	1
30		GEAR COMP STARTER IDLE	起动惰齿轮组	1
31		SPG FRICTION STARTER GERA	起动摩擦弹簧	1
32		SPG STARTER IDLE	驱动轴弹簧	1
33		ROLLER 3 × 8.5	滚子 3 × 8.5	1
34		SHAFT IDLE START	起动惰齿轮轴	1
35		BOLT ASSY SPECIAL DRAIN PLUG	泄油螺丝	1
36		GASKET L COVER A	左曲轴箱盖垫片	1
37		COVER L	左曲轴箱盖	1
38		PIN DOWEL 8 × 14	定位销 8 × 14	2
39		BOLT FLANGE SHF 6 × 40	螺丝 6 × 40	6
40		BOLT FLANGE SHF 6 × 65	螺丝 6 × 65	2
41		CLAMPER THROTTLE CABLE	节流导线夹	1
42		CLAMPER BREATHER DRAIN TUBE	通气管夹	1
43		CLAMPER BRAKE CABLE	煞车导线夹	1
44		STAY MAIN STAND STOPPER	主脚架制止支架	1
45		BOLT FLANGE 6 × 12	螺丝	2
46		TUBE MISSION BREAHER	通气管	1

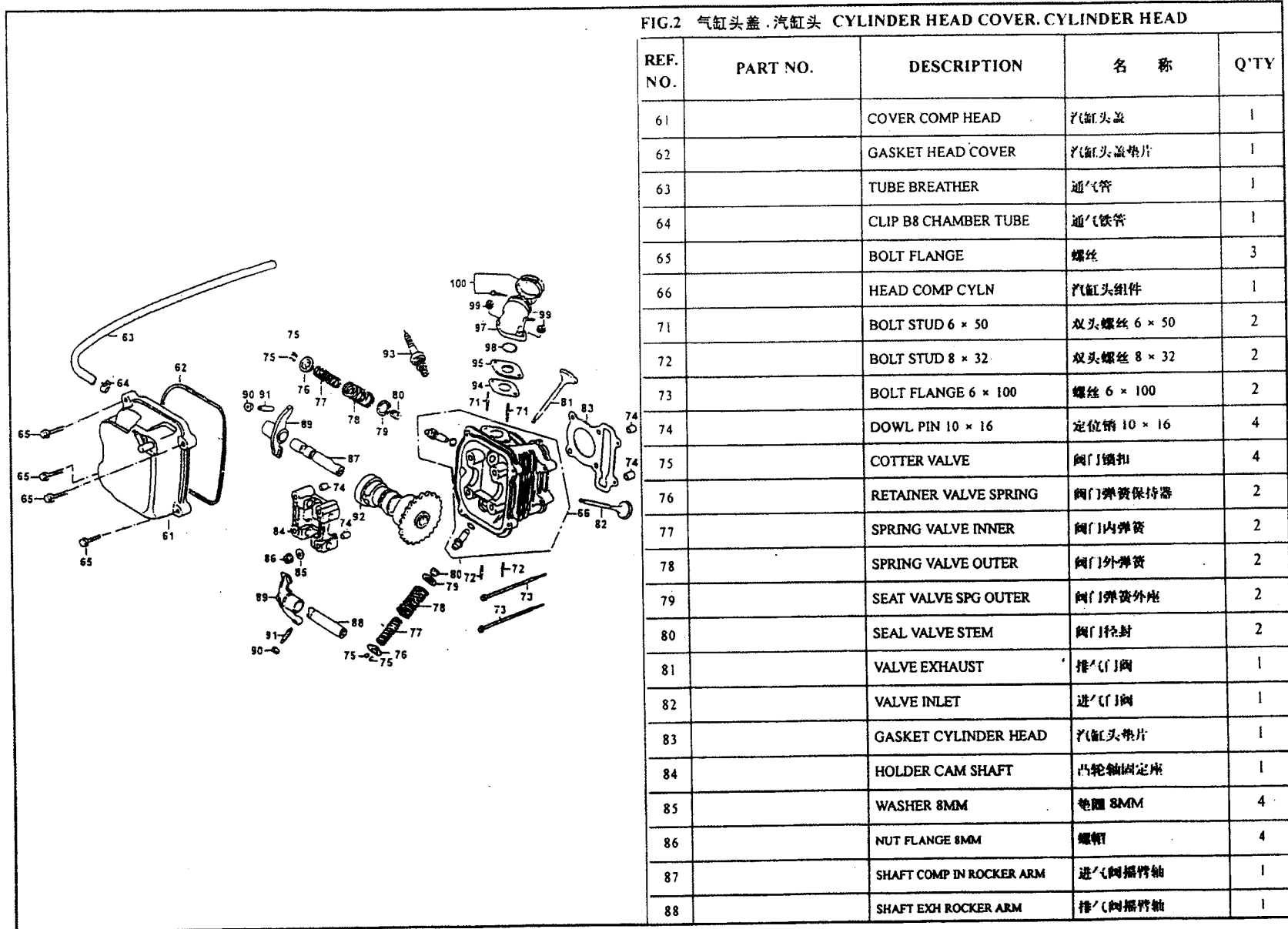


FIG.2 气缸头盖. 汽缸头 CYLINDER HEAD COVER. CYLINDER HEAD

REF. NO.	PART NO.	DESCRIPTION	名称	Q'TY
61		COVER COMP HEAD	汽缸头盖	1
62		GASKET HEAD COVER	汽缸头盖垫片	1
63		TUBE BREATHER	通气管	1
64		CLIP B8 CHAMBER TUBE	通气铁管	1
65		BOLT FLANGE	螺丝	3
66		HEAD COMP CYLND	汽缸头组件	1
71		BOLT STUD 6 × 50	双头螺丝 6 × 50	2
72		BOLT STUD 8 × 32	双头螺丝 8 × 32	2
73		BOLT FLANGE 6 × 100	螺丝 6 × 100	2
74		DOWL PIN 10 × 16	定位销 10 × 16	4
75		COTTER VALVE	阀门锁扣	4
76		RETAINER VALVE SPRING	阀门弹簧保持器	2
77		SPRING VALVE INNER	阀门内弹簧	2
78		SPRING VALVE OUTER	阀门外弹簧	2
79		SEAT VALVE SPG OUTER	阀门弹簧外座	2
80		SEAL VALVE STEM	阀门密封	2
81		VALVE EXHAUST	排气门	1
82		VALVE INLET	进气门	1
83		GASKET CYLINDER HEAD	汽缸头垫片	1
84		HOLDER CAM SHAFT	凸轮轴固定座	1
85		WASHER 8MM	垫圈 8MM	4
86		NUT FLANGE 8MM	螺帽	4
87		SHAFT COMP IN ROCKER ARM	进气门摇臂轴	1
88		SHAFT EXH ROCKER ARM	排气门摇臂轴	1

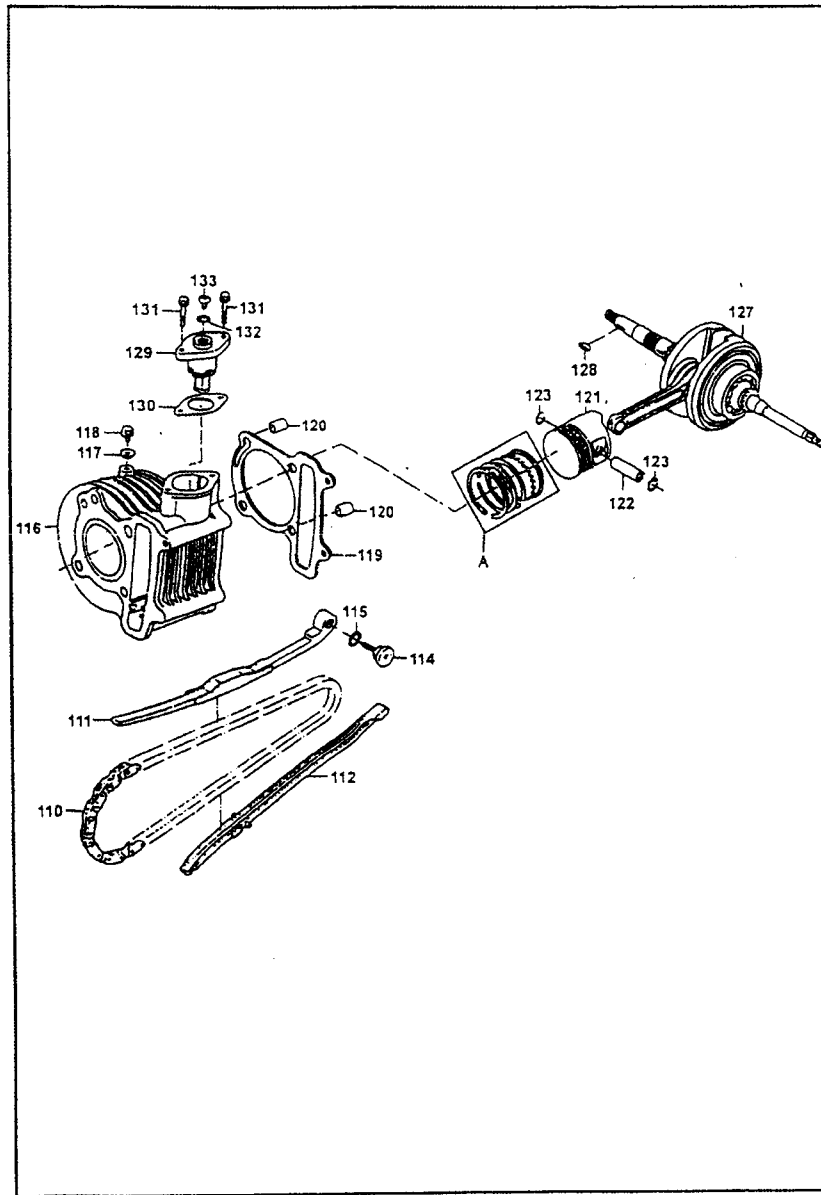


FIG.3 汽缸.活塞.曲轴 CYLINDER.C RANKCASE.P PISTON

REF. NO.	PART NO.	DESCRIPTION	名称	Q'TY
110		CHAIN CAM	凸轮轴内链条	1
111		TENSIONER CAM CHAIN	内链条拉车杆	1
112		GUIDE COMP CAM CHAIN	链条导件	1
114		PIVOT CAM CHAIN TENSIONER	拉力杆螺丝	1
115		O-RING 15.5 × 1.5	O 环 15.5 × 1.5	1
116		CYLINDER COMP	汽缸	1
117		WASHER SEALING 6.5MM	密封垫圈	1
118		BOLT FLANGE 6 × 12	螺丝 6 × 12	1
119		GASKET CYLINDER A	汽缸垫片	1
120		PIN DOWEL 10 × 16	定位销 10 × 16	2
121		PISTON	活塞	1
122		PIN PISTON	活塞销	1
123		CLIP PISTON 15MM	活塞销环夹	2
127		SHAFT COMP CRANK	曲轴	1
128		KEY WOODRUFF 25 × 14 × 4	固定键 25 × 14 × 4	1
129		LIFTER ASSY TENSIONER	内链条调整器	1
130		GASKET TENSIONER LIFTER A	内链条调整器垫片	1
131		BOLT FLANGE SHF 6 × 22	螺丝 6 × 22	2
132		O-RING 1.5 × 9.5	O 环 1.5 × 9.5	1
133		SCREW PAN 6 × 6	螺丝 6 × 6	1
A		RING SET PISTON	活塞环组	1

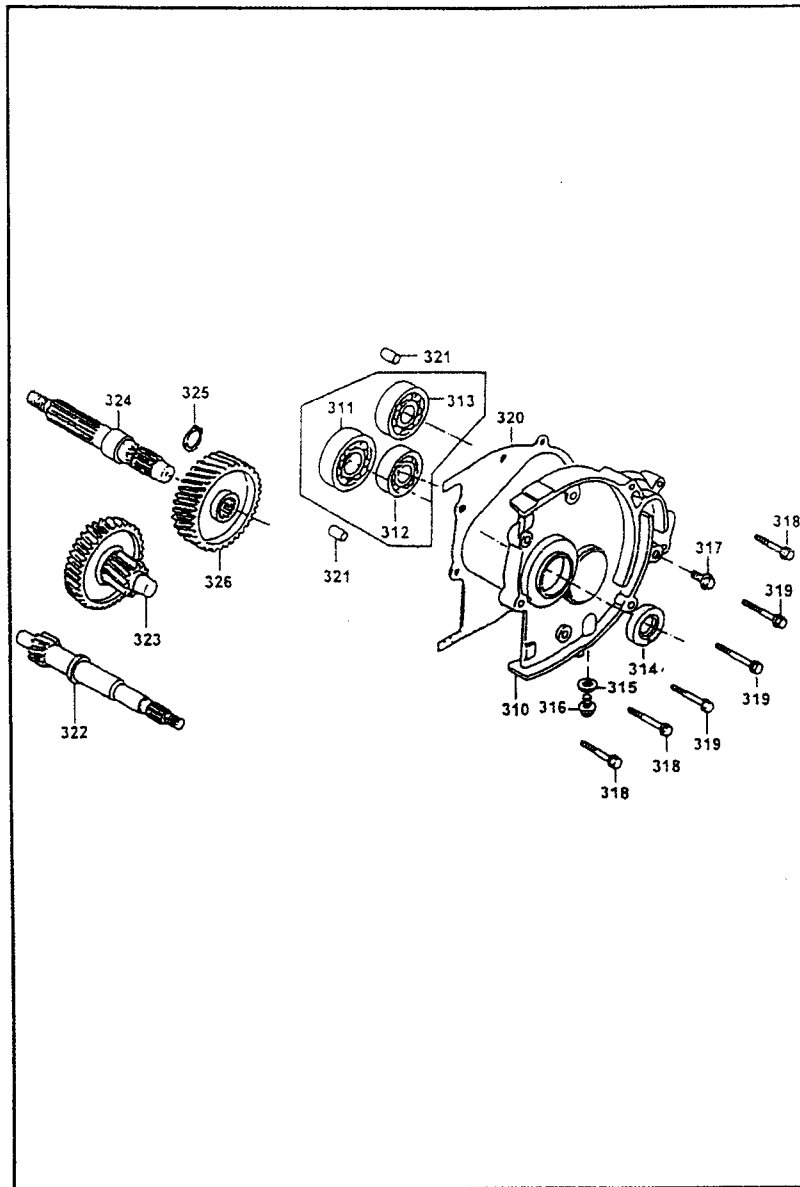


FIG.5 传动系 TRANSMISSION

REF. NO.	PART NO.	DESCRIPTION	名称	Q'TY
310		COVER MISSION	变速箱盖	1
311		BRG BALL RADIAL 6204	轴承 6204	1
312		BRG BALL RADIAL 6202	轴承 6202	1
313		BRG BALL RADIAL 6203	轴承 6203	1
314		OIL SEAL 20 × 32 × 6	油封 20 × 32 × 6	1
315		WASHER 8MM	垫圈 8MM	1
316		BOLT FLANGE 8 × 12	螺栓 8 × 12	1
317		BOLT SPECIAL 8MM	特殊螺栓 8MM	1
318		BOLT FLANGE 6 × 28	螺栓 6 × 28	3
319		BOLT FLANGE 6 × 35	螺栓 6 × 35	3
320		GASKET MISSION COVER A	上轴盖垫片	1
321		PIN DOWL 8 × 14	定位销 8 × 14	2
322		SHAFT DRIVE	驱动轴	1
323		SHAFT COMP COUNTER	副轴轴1	1
324		SHAFT FINAL	最终轴	1
325		CIR CLIP EX 20	外环夹 20	1
326		GEAR FINAL	最终齿轮	1

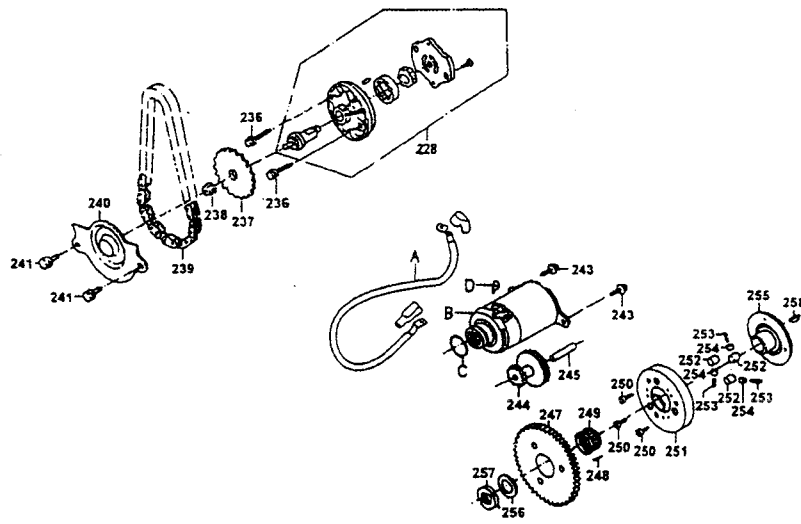


FIG.8 起动机.机油泵 STARTING MOTOR.OIL PUMP

REF. NO.	PART NO.	DESCRIPTION	名称	Q'TY
228		PUMP ASSY OIL	机油泵油组	1
236		SCREW FLAT 6 × 30	螺丝 6 × 30	2
237		SPRKT OIL PUMP DRIVEN	机油泵驱动齿轮	1
238		NUT FLANGE	特殊螺帽	1
239		CHAIN OIL PUMP	机油泵驱动链条	1
240		SEP ARATER OIL	机油分隔板	1
241		BOLT FLANGE SH	螺丝	2
243		BOLT FLANGE SH	螺丝	2
244		GEAR STARTER REDUCTION	起动机减速齿轮	1
245		SHAFT STARTER REDUCTION GEAR	起动机减速齿轮轴	1
247		GEAR COMP STARTING CLUTCH	起动机齿轮	1
248		PIN DOWEL 6 × 10	定位销 6 × 10	1
249		BRG NEEDLE 28 × 32 × 17	滚针轴承 28 × 32 × 17	1
250		SOCKET BOLT 8 × 10	内六角螺丝 8 × 10	3
251		OUTER COMP STARTING CLUTCH	离合器外套	1
252		ROLLER 10 × 10	滚子 10 × 10	3
253		SPRING ROLLER STARTER CLUTCH	离合器滚子弹簧	3
254		CAP STARTING ROLLER SPRING	滚子弹簧盖	3
255		FLANGE STARTING CLUTCH	起动机离合器凸缘	1
256		WASHER THRUST 22.2 × 31 × 2.5	华司 22.2 × 31 × 2.5	1
257		NUT LOCK 22MM	锁定螺帽 22MM	1
258		KEY WOODRUFF 25 × 14 × 4	固定键 25 × 14 × 4	1
A		CABLE START MOTOR	起动机马达配线	1
B		MOTOR UNIT START	起动机马达组	1

